

Office of Rail Transport

<https://utk.gov.pl/en/markettstatistics-and-ann/monthly-statistics/monthly-statistics-2017/13925,Passenger-rail-transport-results-in-2017.html>
2021-12-05, 18:37

Passenger rail transport results in 2017



[More details in MS Excel file](#)

| | January - December 2017 | January - December 2016 | January - December 2015 | change % 2017/2016 | change % 2016/2015 |
|------------------------------------|-------------------------|-------------------------|-------------------------|--------------------|--------------------|
| number of passengers [m] | 303.56 | 292.55 | 280.31 | 3.76% | 4.37% |
| transport performance [m pass-km] | 20 321.04 | 19 180.98 | 17 443.01 | 5.94% | 9.89% |
| operating performance [m train-km] | 162.26 | 159.98 | 143.44 | 1.43% | 11.53% |

Number of passengers [m]

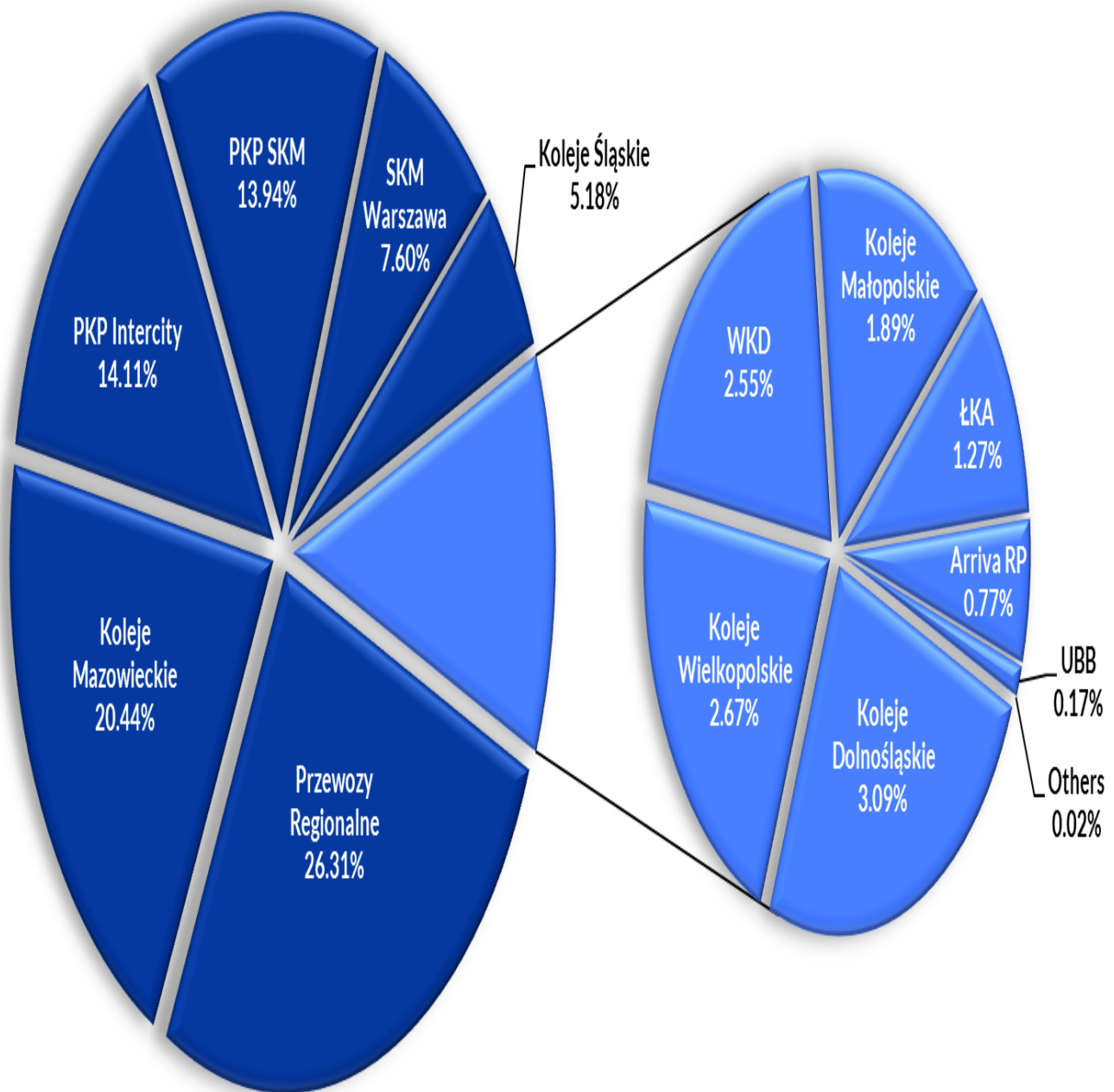
| | 2017 | 2016 | 2015 | change % 2017/2016 | change % 2016/2015 |
|-----------|-------|-------|-------|--------------------|--------------------|
| January | 25.71 | 23.36 | 22.49 | 10.05% | 3.86% |
| February | 23.55 | 23.41 | 21.57 | 0.59% | 8.50% |
| March | 26.48 | 24.72 | 24.29 | 7.13% | 1.77% |
| April | 25.11 | 24.55 | 23.60 | 2.27% | 4.03% |
| May | 26.82 | 25.44 | 24.77 | 5.43% | 2.71% |
| June | 25.80 | 24.38 | 23.28 | 5.81% | 4.73% |
| July | 25.29 | 25.43 | 23.02 | -0.56% | 10.45% |
| August | 24.95 | 24.24 | 22.82 | 2.95% | 6.21% |
| September | 24.14 | 23.32 | 22.22 | 3.51% | 4.97% |
| October | 26.55 | 25.68 | 25.38 | 3.39% | 1.17% |
| November | 24.88 | 24.61 | 24.53 | 1.08% | 0.33% |
| December | 24.28 | 23.40 | 22.32 | 3.75% | 4.83% |

Share of RUs in terms of number of passengers

| | 2017 | 2016 |
|---------------------|--------|--------|
| Przewozy Regionalne | 26.31% | 27.16% |
| Koleje Mazowieckie | 20.44% | 20.81% |
| PKP Intercity | 14.11% | 13.17% |
| PKP SKM | 13.94% | 14.31% |
| SKM Warszawa | 7.60% | 8.14% |
| Koleje Śląskie | 5.18% | 5.24% |

| | 2017 | 2016 |
|----------------------|-------|-------|
| Koleje Dolnośląskie | 3.09% | 2.50% |
| Koleje Wielkopolskie | 2.67% | 2.82% |
| WKD | 2.55% | 2.35% |
| Koleje Małopolskie | 1.89% | 1.64% |
| ŁKA | 1.27% | 0.86% |
| Arriva RP | 0.77% | 0.80% |
| UBB | 0.17% | 0.17% |
| Others | 0.02% | 0.02% |

Share of RUs in terms of number of passengers
January - December 2017



Transport performance [m pass-km]

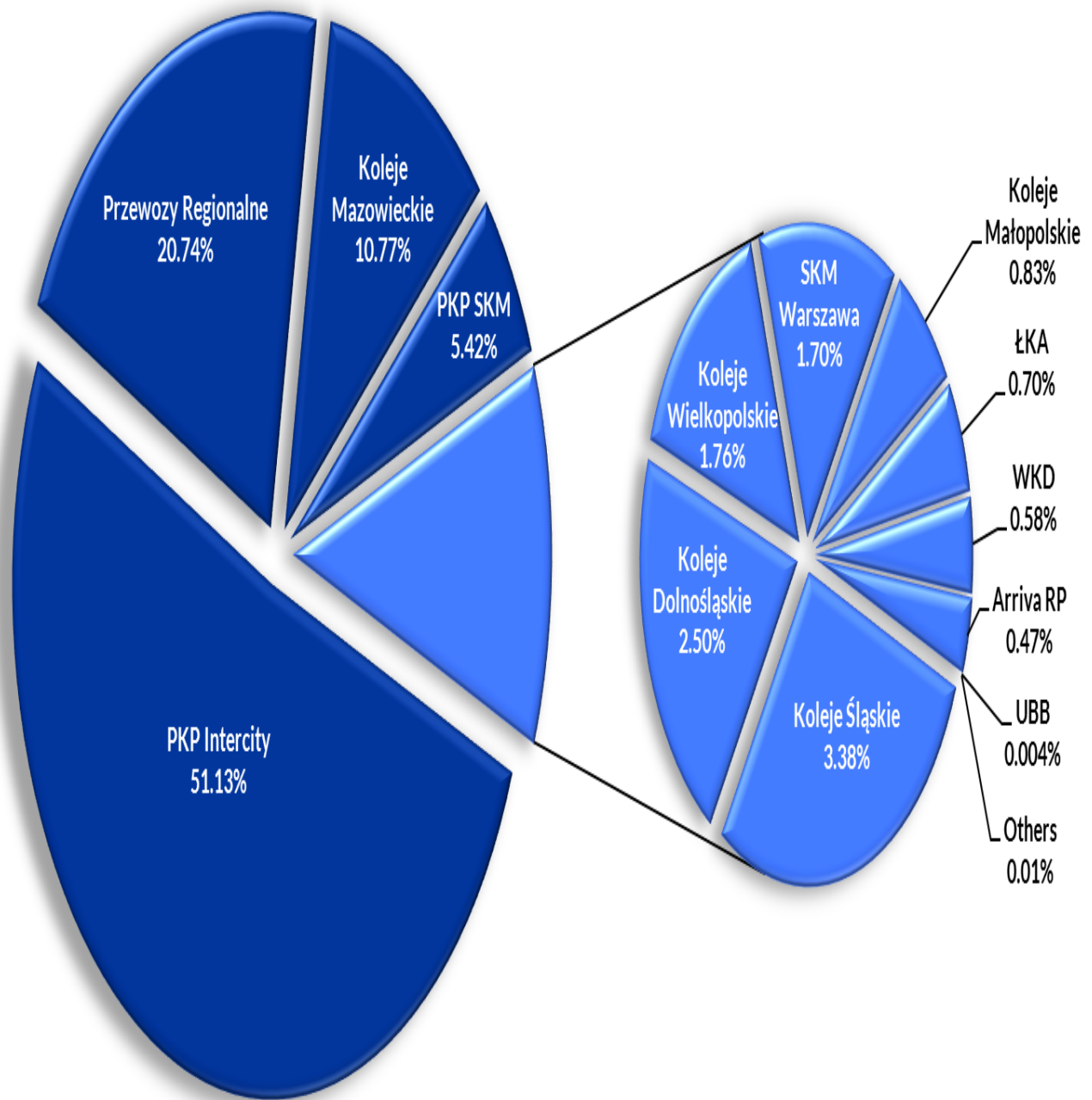
| | 2017 | 2016 | 2015 | change % 2017/2016 | change % 2016/2015 |
|-----------|----------|----------|----------|-----------------------|-----------------------|
| January | 1 556.10 | 1 385.45 | 1 257.09 | 12.32% | 10.21% |
| February | 1 502.47 | 1 437.02 | 1 251.25 | 4.55% | 14.85% |
| March | 1 595.72 | 1 465.25 | 1 329.17 | 8.90% | 10.24% |
| April | 1 645.83 | 1 494.78 | 1 387.71 | 10.11% | 7.72% |
| May | 1 754.83 | 1 637.91 | 1 464.48 | 7.14% | 11.84% |
| June | 1 805.86 | 1 609.51 | 1 490.52 | 12.20% | 7.98% |
| July | 2 046.50 | 1 986.52 | 1 792.58 | 3.02% | 10.82% |
| August | 2 021.84 | 1 944.74 | 1 782.85 | 3.96% | 9.08% |
| September | 1 619.28 | 1 564.12 | 1 404.76 | 3.53% | 11.34% |
| October | 1 662.39 | 1 596.76 | 1 488.75 | 4.11% | 7.25% |
| November | 1 551.05 | 1 530.79 | 1 415.64 | 1.32% | 8.13% |

| | 2017 | 2016 | 2015 | change % 2017/2016 | change % 2016/2015 |
|----------|----------|----------|----------|-----------------------|-----------------------|
| December | 1 559.17 | 1 528.15 | 1 378.20 | 2.03% | 10.88% |

Share of RUs in terms of transport performance

| | 2017 | 2016 |
|----------------------|--------|--------|
| PKP Intercity | 51.13% | 49.35% |
| Przewozy Regionalne | 20.74% | 22.22% |
| Koleje Mazowieckie | 10.77% | 11.28% |
| PKP SKM | 5.42% | 5.74% |
| Koleje Śląskie | 3.38% | 3.09% |
| Koleje Dolnośląskie | 2.50% | 2.22% |
| Koleje Wielkopolskie | 1.76% | 2.04% |
| SKM Warszawa | 1.70% | 1.86% |
| Koleje Małopolskie | 0.83% | 0.49% |
| ŁKA | 0.70% | 0.64% |
| WKD | 0.58% | 0.56% |
| Arriva RP | 0.47% | 0.50% |
| UBB | 0.004% | 0.004% |
| Others | 0.01% | 0.01% |

Share of RUs in terms of transport performance January - December 2017



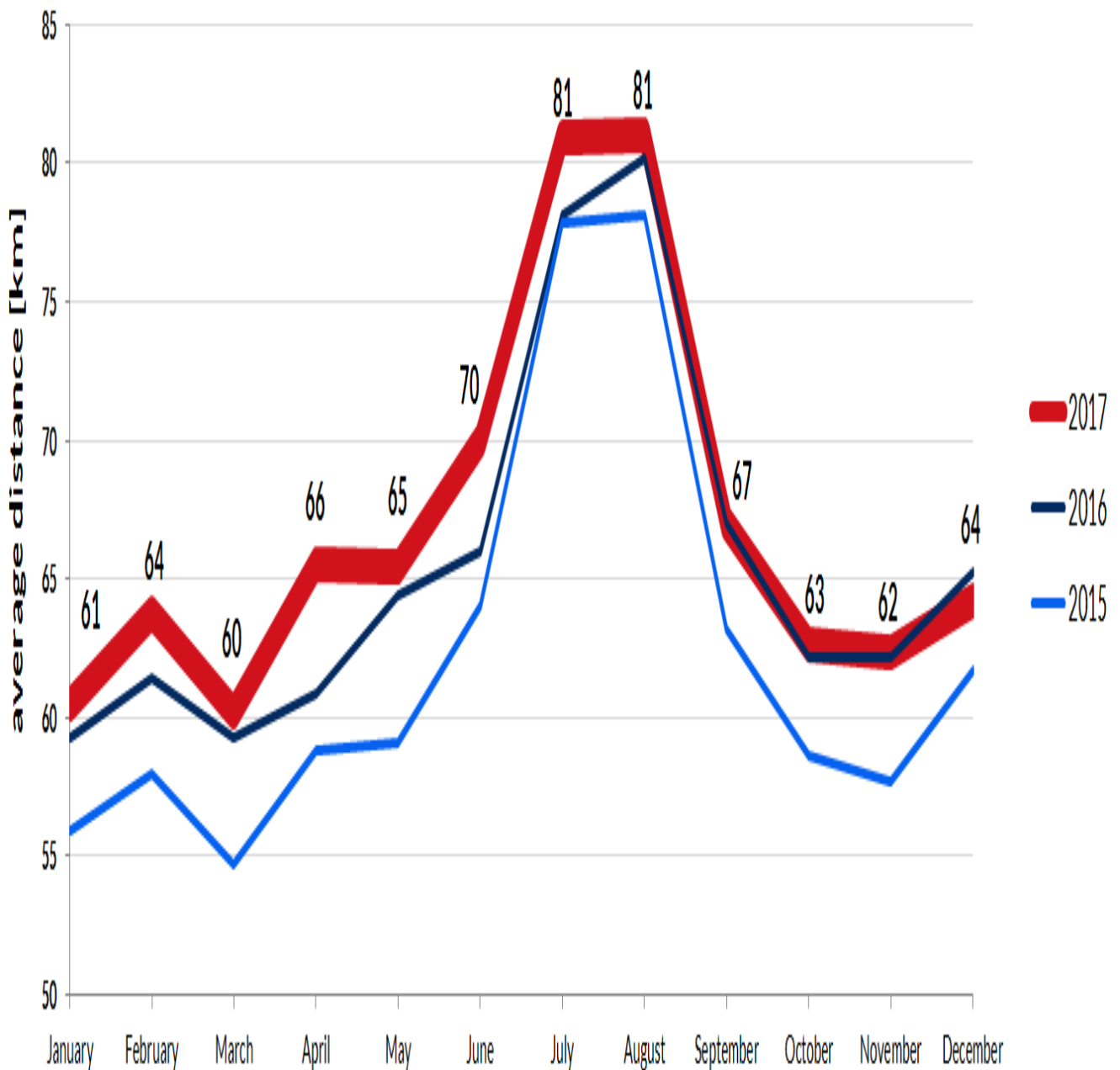
Operating performance [m train-km]

| | 2017 | 2016 | 2015 | change % 2017/2016 | change % 2016/2015 |
|-----------|-------|-------|-------|-----------------------|-----------------------|
| January | 13.77 | 13.20 | 11.96 | 4.36% | 10.37% |
| February | 12.63 | 12.74 | 11.09 | -0.92% | 14.88% |
| March | 13.93 | 13.26 | 12.18 | 5.01% | 8.87% |
| April | 13.08 | 12.98 | 11.63 | 0.79% | 11.59% |
| May | 13.86 | 13.47 | 11.94 | 2.92% | 12.82% |
| June | 13.43 | 13.34 | 11.71 | 0.68% | 13.85% |
| July | 14.03 | 14.28 | 12.66 | -1.74% | 12.81% |
| August | 14.27 | 14.01 | 12.49 | 1.83% | 12.24% |
| September | 13.11 | 13.07 | 11.58 | 0.32% | 12.87% |
| October | 13.50 | 13.23 | 12.10 | 2.01% | 9.40% |
| November | 13.07 | 12.92 | 11.69 | 1.16% | 10.51% |

| | 2017 | 2016 | 2015 | change % 2017/2016 | change % 2016/2015 |
|----------|-------|-------|-------|-----------------------|-----------------------|
| December | 13.59 | 13.48 | 12.41 | 0.82% | 8.54% |

Average distance [km]

| | 2017 | 2016 | 2015 | change % 2017/2016 | change % 2016/2015 |
|-----------|------|------|------|-----------------------|-----------------------|
| January | 61 | 59 | 56 | 2.06% | 6.11% |
| February | 64 | 61 | 58 | 3.94% | 5.85% |
| March | 60 | 59 | 55 | 1.66% | 8.32% |
| April | 66 | 61 | 59 | 7.66% | 3.54% |
| May | 65 | 64 | 59 | 1.62% | 8.89% |
| June | 70 | 66 | 64 | 6.04% | 3.11% |
| July | 81 | 78 | 78 | 3.60% | 0.33% |
| August | 81 | 80 | 78 | 0.99% | 2.70% |
| September | 67 | 67 | 63 | 0.02% | 6.07% |
| October | 63 | 62 | 59 | 0.70% | 6.01% |
| November | 62 | 62 | 58 | 0.25% | 7.78% |
| December | 64 | 65 | 62 | -1.66% | 5.77% |



List of railway undertakings performing freight transport activity in 2017 based on passenger licence

| | |
|---|--|
| 1 | PKP Intercity S.A. |
| 2 | PKP SKM w Trójmieście Sp. z o.o. |
| 3 | PKP Cargo S.A. |
| 4 | Przewozy Regionalne Sp. z o.o. |
| 5 | Koleje Mazowieckie - KM Sp. z o.o. |
| 6 | Warszawska Kolej Dojazdowa Sp. z o.o. |
| 7 | Szybka Kolej Miejska Sp. z o.o. - Warszawa |

| | |
|----|--|
| 8 | Koleje Dolnośląskie S.A. |
| 9 | Koleje Wielkopolskie Sp. z o.o. |
| 10 | Koleje Śląskie Sp. z o.o. |
| 11 | Arriva RP Sp. z o.o. |
| 12 | Łódzka Kolej Aglomeracyjna Sp. z o.o. |
| 13 | Koleje Małopolskie Sp. z o.o. |
| 14 | Cargo Master Sp. z o.o. |
| 15 | SKPL Cargo Sp. z o.o. |
| 16 | Railpolonia Sp. z o.o. |
| 17 | Parowozownia Wolsztyn |
| 18 | Dolnośląskie Linie Autobusowe sp. z o.o. |

Please note that data do not include results of narrow-gauge railway undertakings.
Furthermore, there might be corrections and updates.

Monitoring and Analysis Unit in the Railway Market Regulation Department

analizy@utk.gov.pl

tel. +48 22 749 15 50