

Office of Rail Transport

https://utk.gov.pl/en/markettstatistics-and-ann/monthly-statistics/monthly-statistics-2017/13715,Passenger-rail-transport
-results-in-2017.html
23.04.2024, 14:53

This page has a newer version

[Click here to continue](#)

Passenger rail transport results in 2017

A large, light gray icon of a document with a folded corner, representing an Excel file. A green rectangular box is overlaid on the bottom left of the icon, containing the text 'XLSX' in white, bold, sans-serif font.

XLSX

[More details in MS](#)

[Excel file](#)

| | January - October 2017 | January - October 2016 | January - October 2015 | change % 2017/2016 | change % 2016/2015 |
|------------------------------------|---------------------------|---------------------------|---------------------------|-----------------------|-----------------------|
| number of passengers [m] | 254.17 | 244.53 | 233.45 | 3.94% | 4.75% |
| transport performance [m pass-km] | 17 201.03 | 16 122.04 | 14 649.17 | 6.69% | 10.05% |
| operating performance [m train-km] | 135.58 | 133.59 | 119.34 | 1.49% | 11.94% |

Number of passengers [m]

| | 2017 | 2016 | 2015 | change % 2017/2016 | change % 2016/2015 |
|----------|-------|-------|-------|-----------------------|-----------------------|
| January | 25.69 | 23.36 | 22.49 | 9.99% | 3.86% |
| February | 23.53 | 23.41 | 21.57 | 0.54% | 8.50% |
| March | 26.47 | 24.72 | 24.29 | 7.07% | 1.77% |
| April | 25.09 | 24.55 | 23.60 | 2.21% | 4.03% |
| May | 26.79 | 25.44 | 24.77 | 5.30% | 2.71% |
| June | 25.77 | 24.38 | 23.28 | 5.68% | 4.73% |
| July | 25.26 | 25.43 | 23.02 | -0.67% | 10.45% |

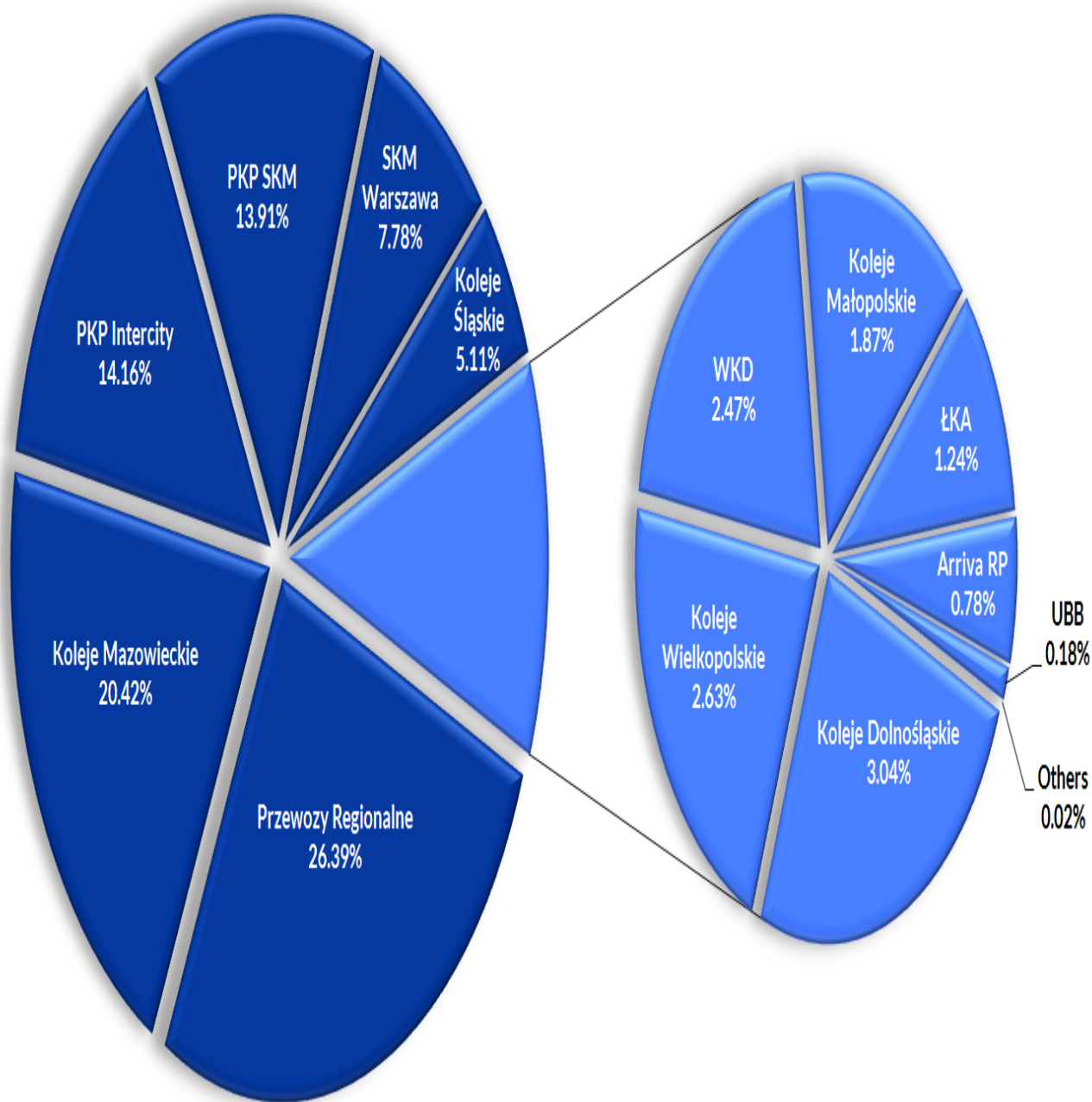
| | 2017 | 2016 | 2015 | change % 2017/2016 | change % 2016/2015 |
|-----------|-------|-------|-------|-----------------------|-----------------------|
| August | 24.93 | 24.24 | 22.82 | 2.84% | 6.21% |
| September | 24.11 | 23.32 | 22.22 | 3.36% | 4.97% |
| October | 26.54 | 25.68 | 25.38 | 3.33% | 1.17% |
| November | | 24.61 | 24.53 | | 0.33% |
| December | | 23.40 | 22.32 | | 4.83% |

Share of RUs in terms of number of passengers

| | I-X 2017 | I-X 2016 | 2016 |
|----------------------|----------|----------|--------|
| Przewozy Regionalne | 26.39% | 27.21% | 27.16% |
| Koleje Mazowieckie | 20.42% | 20.60% | 20.81% |
| PKP Intercity | 14.16% | 13.14% | 13.17% |
| PKP SKM | 13.91% | 14.27% | 14.31% |
| SKM Warszawa | 7.78% | 8.52% | 8.14% |
| Koleje Śląskie | 5.11% | 5.18% | 5.24% |
| Koleje Dolnośląskie | 3.04% | 2.47% | 2.50% |
| Koleje Wielkopolskie | 2.63% | 2.82% | 2.82% |
| WKD | 2.47% | 2.32% | 2.35% |
| Koleje Małopolskie | 1.87% | 1.62% | 1.64% |
| ŁKA | 1.24% | 0.83% | 0.86% |
| Arriva RP | 0.78% | 0.81% | 0.80% |
| UBB | 0.18% | 0.19% | 0.17% |
| Others | 0.02% | 0.02% | 0.02% |

Share of RUs in terms of number of passengers

January - October 2017



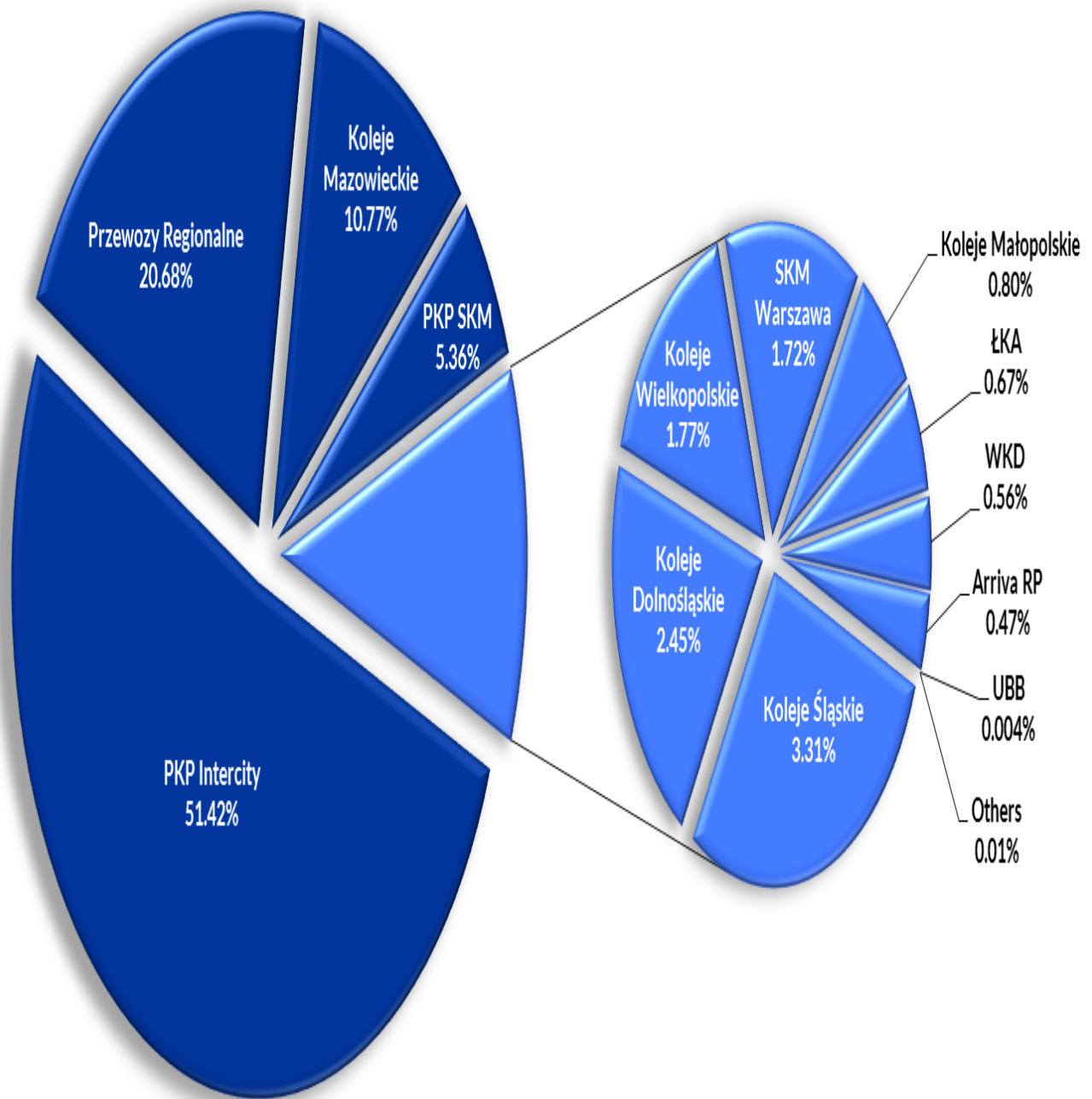
Transport performance [m pass-km]

| | 2017 | 2016 | 2015 | change % 2017/2016 | change % 2016/2015 |
|-----------|----------|----------|----------|-----------------------|-----------------------|
| January | 1 555.45 | 1 385.45 | 1 257.09 | 12.27% | 10.21% |
| February | 1 501.86 | 1 437.02 | 1 251.25 | 4.51% | 14.85% |
| March | 1 594.99 | 1 465.25 | 1 329.17 | 8.85% | 10.24% |
| April | 1 645.10 | 1 494.78 | 1 387.71 | 10.06% | 7.72% |
| May | 1 753.64 | 1 637.91 | 1 464.48 | 7.07% | 11.84% |
| June | 1 804.73 | 1 609.51 | 1 490.52 | 12.13% | 7.98% |
| July | 2 045.39 | 1 986.52 | 1 792.58 | 2.96% | 10.82% |
| August | 2 019.74 | 1 944.74 | 1 782.85 | 3.86% | 9.08% |
| September | 1 618.69 | 1 564.12 | 1 404.76 | 3.49% | 11.34% |
| October | 1 661.43 | 1 596.76 | 1 488.75 | 4.05% | 7.25% |
| November | | 1 530.79 | 1 415.64 | | 8.13% |
| December | | 1 528.15 | 1 378.20 | | 10.88% |

Share of RUs in terms of transport performance

| | I-X 2017 | I-X 2016 | 2016 |
|----------------------|----------|----------|--------|
| PKP Intercity | 51.42% | 49.58% | 49.35% |
| Przewozy Regionalne | 20.68% | 22.26% | 22.22% |
| Koleje Mazowieckie | 10.77% | 11.15% | 11.28% |
| PKP SKM | 5.36% | 5.66% | 5.74% |
| Koleje Śląskie | 3.31% | 3.05% | 3.09% |
| Koleje Dolnośląskie | 2.45% | 2.18% | 2.22% |
| Koleje Wielkopolskie | 1.77% | 2.03% | 2.04% |
| SKM Warszawa | 1.72% | 1.94% | 1.86% |
| Koleje Małopolskie | 0.80% | 0.47% | 0.49% |
| ŁKA | 0.67% | 0.60% | 0.64% |
| WKD | 0.56% | 0.55% | 0.56% |
| Arriva RP | 0.47% | 0.50% | 0.50% |
| UBB | 0.004% | 0.004% | 0.004% |
| Others | 0.01% | 0.01% | 0.01% |

Share of RUs in terms of transport performance January - October 2017

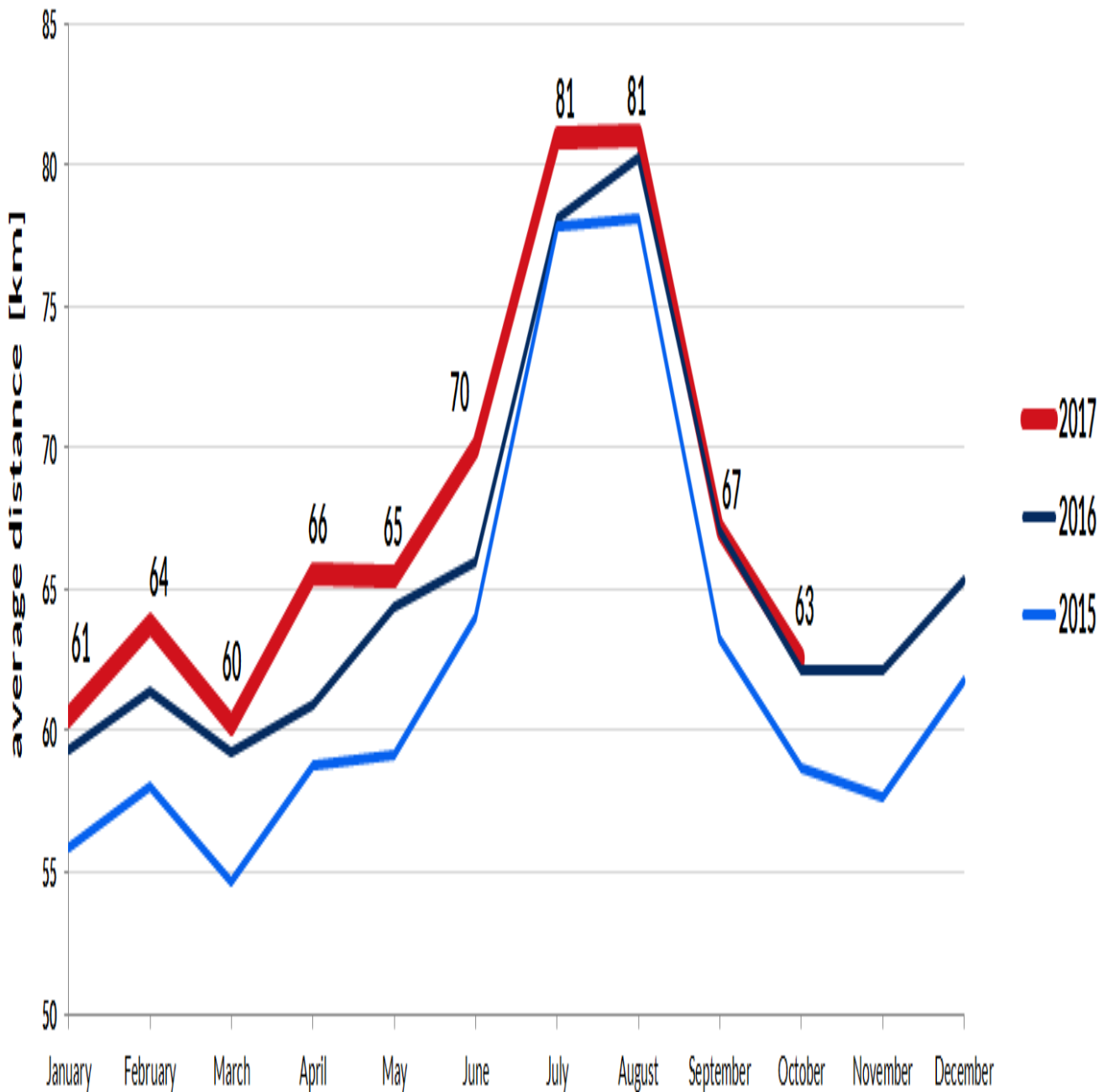


Operating performance [m train-km]

| | 2017 | 2016 | 2015 | change % 2017/2016 | change % 2016/2015 |
|-----------|-------|-------|-------|--------------------|--------------------|
| January | 13.77 | 13.20 | 11.96 | 4.36% | 10.37% |
| February | 12.63 | 12.74 | 11.09 | -0.92% | 14.88% |
| March | 13.93 | 13.26 | 12.18 | 5.01% | 8.87% |
| April | 13.08 | 12.98 | 11.63 | 0.79% | 11.59% |
| May | 13.86 | 13.47 | 11.94 | 2.92% | 12.82% |
| June | 13.43 | 13.34 | 11.71 | 0.68% | 13.85% |
| July | 14.03 | 14.28 | 12.66 | -1.74% | 12.81% |
| August | 14.27 | 14.01 | 12.49 | 1.83% | 12.24% |
| September | 13.11 | 13.07 | 11.58 | 0.32% | 12.87% |
| October | 13.47 | 13.23 | 12.10 | 1.77% | 9.40% |
| November | | 12.92 | 11.69 | | 10.51% |
| December | | 13.48 | 12.41 | | 8.54% |

Average distance [km]

| | 2017 | 2016 | 2015 | change % 2017/2016 | change % 2016/2015 |
|-----------|------|------|------|-----------------------|-----------------------|
| January | 61 | 59 | 56 | 2.07% | 6.11% |
| February | 64 | 61 | 58 | 3.95% | 5.85% |
| March | 60 | 59 | 55 | 1.67% | 8.32% |
| April | 66 | 61 | 59 | 7.67% | 3.54% |
| May | 65 | 64 | 59 | 1.68% | 8.89% |
| June | 70 | 66 | 64 | 6.11% | 3.11% |
| July | 81 | 78 | 78 | 3.66% | 0.33% |
| August | 81 | 80 | 78 | 0.99% | 2.70% |
| September | 67 | 67 | 63 | 0.12% | 6.07% |
| October | 63 | 62 | 59 | 0.70% | 6.01% |
| November | | 62 | 58 | | 7.78% |
| December | | 65 | 62 | | 5.77% |



List of railway undertakings performing passenger transport activity in 2017 based on passenger licence

| | |
|---|--|
| 1 | PKP Intercity S.A. |
| 2 | PKP SKM w Trójmieście Sp. z o.o. |
| 3 | PKP Cargo S.A. |
| 4 | Przewozy Regionalne Sp. z o.o. |
| 5 | Koleje Mazowieckie - KM Sp. z o.o. |
| 6 | Warszawska Kolej Dojazdowa Sp. z o.o. |
| 7 | Szybka Kolej Miejska Sp. z o.o. - Warszawa |

| | |
|----|--|
| 8 | Koleje Dolnośląskie S.A. |
| 9 | Koleje Wielkopolskie Sp. z o.o. |
| 10 | Koleje Śląskie Sp. z o.o. |
| 11 | Arriva RP Sp. z o.o. |
| 12 | Łódzka Kolej Aglomeracyjna Sp. z o.o. |
| 13 | Koleje Małopolskie Sp. z o.o. |
| 14 | Cargo Master Sp. z o.o. |
| 15 | SKPL Cargo Sp. z o.o. |
| 16 | Railpolonia Sp. z o.o. |
| 17 | Parowozownia Wolsztyn |
| 18 | Dolnośląskie Linie Autobusowe sp. z o.o. |

Please note that data do not include results of narrow-gauge railway undertakings.
Furthermore, there might be corrections and updates.

Analysis Unit in the Railway Market Regulation Department

(DRRK - Departament Regulacji Rynku Kolejowego)

analizy@utk.gov.pl

tel. +48 22 749 15 50