

Office of Rail Transport

https://utk.gov.pl/en/markettstatistics-and-ann/monthly-statistics/monthly-statistics-2017/13664,Passenger-rail-transport
-results-in-2017.html
24.04.2024, 09:56

This page has a newer version

[Click here to continue](#)

Passenger rail transport results in 2017

A large, light gray icon of a document with a folded corner, representing a file. Overlaid on the bottom left of this icon is a dark green rectangle with the word "XLSX" in white, bold, sans-serif font.

XLSX

[More in MS Excel](#)

[file](#)

	January - September 2017	January - September 2016	January - September 2015	change % 2017/2016	change % 2016/2015
Number of passengers [m]	227.64	218.85	208.07	4.01%	5.18%
Transport performance [m pass-km]	15 539.60	14 525.29	13 160.42	6.98%	10.37%
Operational performance [m train-km]	121.99	120.35	107.24	1.37%	12.23%

Number of passengers [m]

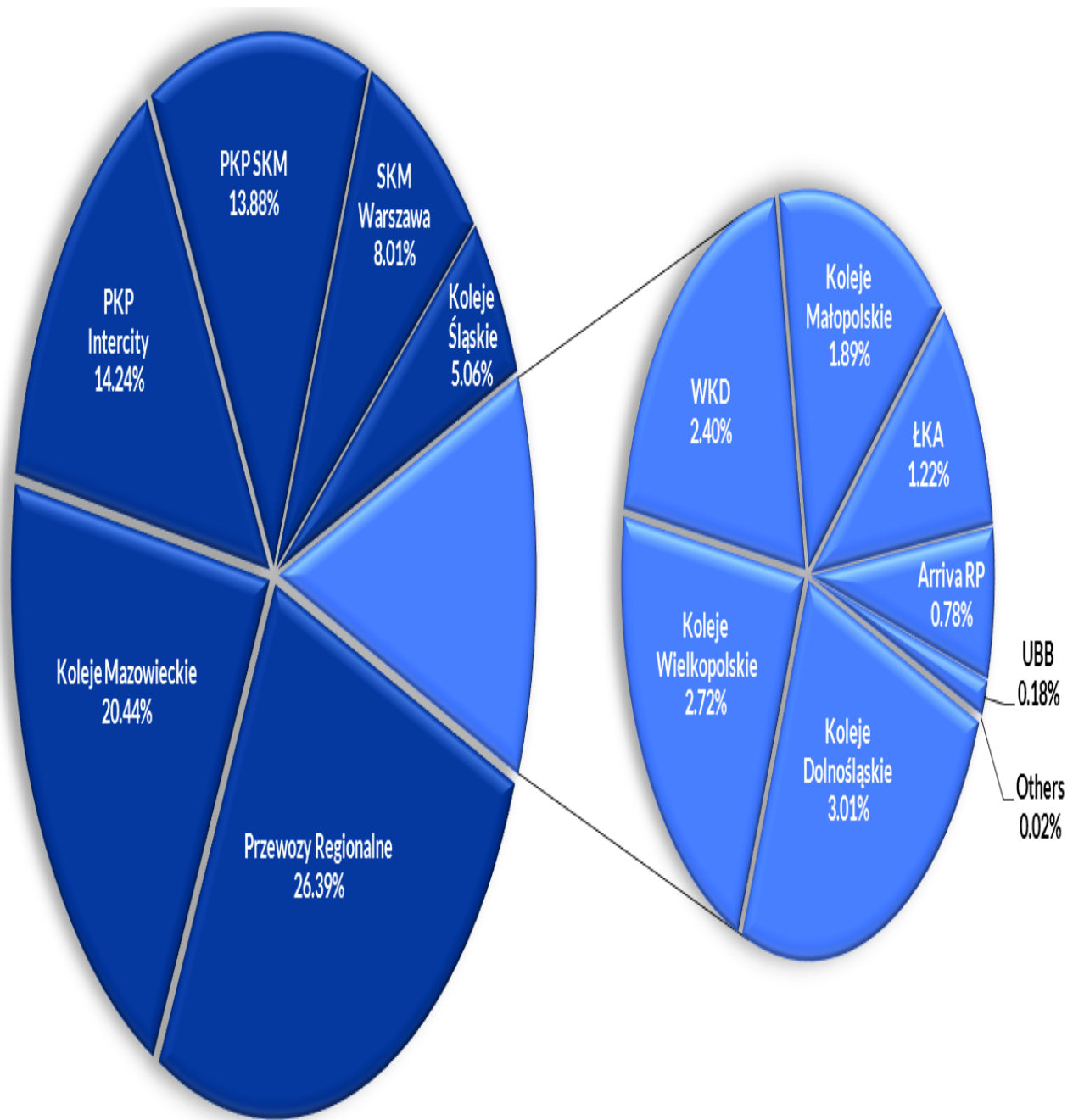
	2017	2016	2015	change % 2017/2016	change % 2016/2015
January	25.69	23.36	22.49	9.99%	3.86%
February	23.53	23.41	21.57	0.54%	8.50%
March	26.47	24.72	24.29	7.07%	1.77%
April	25.09	24.55	23.60	2.21%	4.03%
May	26.79	25.44	24.77	5.30%	2.71%
June	25.77	24.38	23.28	5.68%	4.73%
July	25.26	25.43	23.02	-0.67%	10.45%
August	24.93	24.24	22.82	2.84%	6.21%
September	24.11	23.32	22.22	3.36%	4.97%
October		25.68	25.38		1.17%

	2017	2016	2015	change % 2017/2016	change % 2016/2015
November		24.61	24.53		0.33%
December		23.40	22.32		4.83%

Share of RUs in terms of number of passengers

	I-IX 2017	I-IX 2016	2016
Przewozy Regionalne	26.39%	27.22%	27.16%
Koleje Mazowieckie	20.44%	20.51%	20.81%
PKP Intercity	14.24%	13.18%	13.17%
PKP SKM	13.88%	14.29%	14.31%
SKM Warszawa	7.87%	8.52%	8.14%
Koleje Śląskie	5.06%	5.22%	5.24%
Koleje Dolnośląskie	3.01%	2.46%	2.50%
Koleje Wielkopolskie	2.63%	2.81%	2.82%
WKD	2.40%	2.32%	2.35%
Koleje Małopolskie	1.89%	1.61%	1.64%
ŁKA	1.22%	0.83%	0.86%
Arriva RP	0.78%	0.81%	0.80%
UBB	0.18%	0.19%	0.17%
Others	0.02%	0.03%	0.02%

Share of RUs in terms of number of passengers January - September 2017



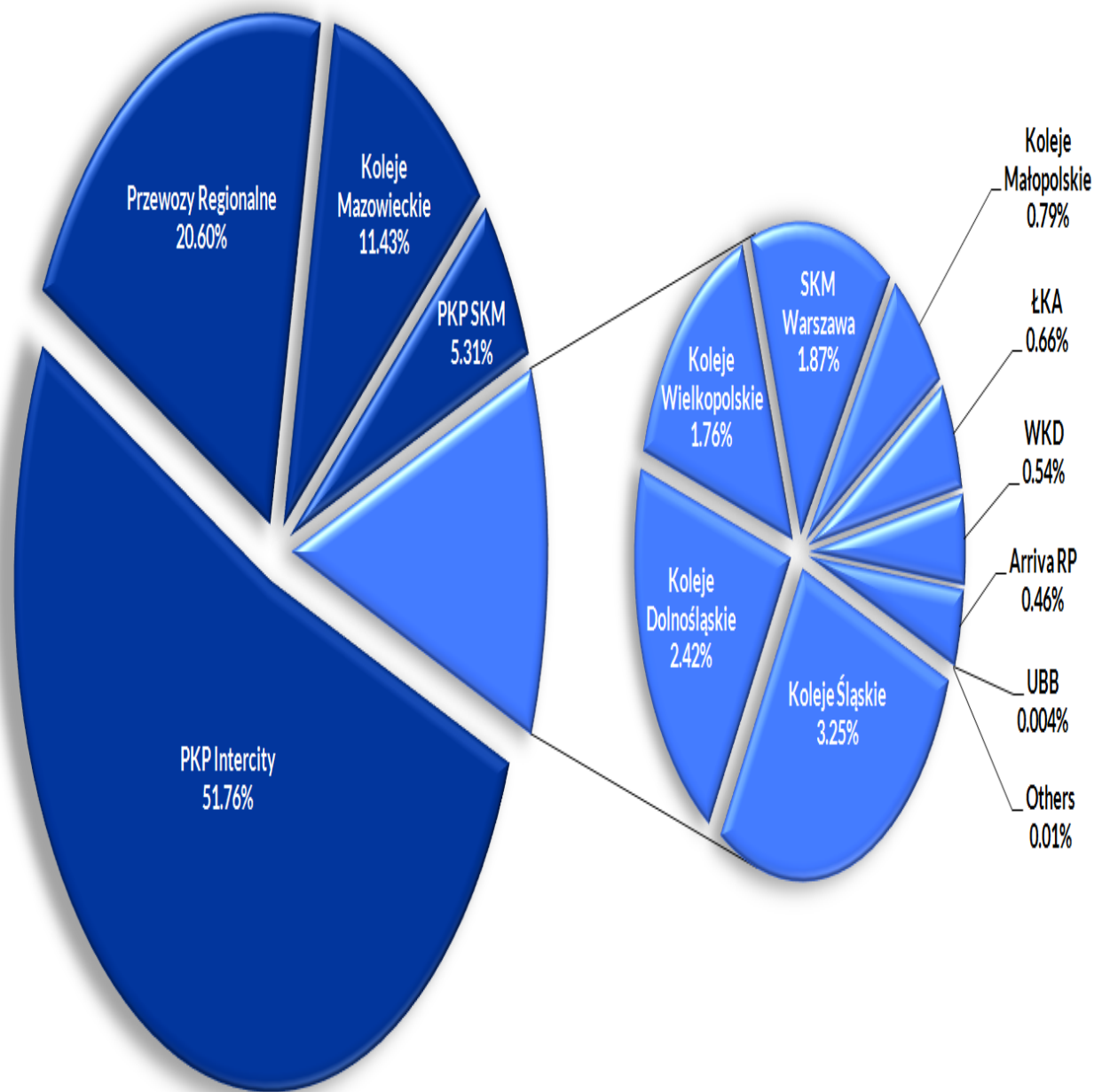
Transport performance [m pass-km]

	2017	2016	2015	change % 2017/2016	change % 2016/2015
January	1 555.45	1 385.45	1 257.09	12.27%	10.21%
February	1 501.86	1 437.02	1 251.25	4.51%	14.85%
March	1 594.99	1 465.25	1 329.17	8.85%	10.24%
April	1 645.10	1 494.78	1 387.71	10.06%	7.72%
May	1 753.64	1 637.91	1 464.48	7.07%	11.84%
June	1 804.73	1 609.51	1 490.52	12.13%	7.98%
July	2 045.39	1 986.52	1 792.58	2.96%	10.82%
August	2 019.74	1 944.74	1 782.85	3.86%	9.08%
September	1 618.69	1 564.12	1 404.76	3.49%	11.34%
October		1 596.76	1 488.75		7.25%
November		1 530.79	1 415.64		8.13%
December		1 528.15	1 378.20		10.88%

Share of RUs in terms of transport performance

	I-IX 2017	I-IX 2016	2016
PKP Intercity	51.76%	49.80%	49.35%
Przewozy Regionalne	20.60%	22.23%	22.22%
Koleje Mazowieckie	10.72%	11.08%	11.28%
PKP SKM	5.31%	5.61%	5.74%
Koleje Śląskie	3.25%	3.06%	3.09%
Koleje Dolnośląskie	2.42%	2.17%	2.22%
Koleje Wielkopolskie	1.76%	2.01%	2.04%
SKM Warszawa	1.73%	1.93%	1.86%
Koleje Małopolskie	0.79%	0.47%	0.49%
ŁKA	0.66%	0.59%	0.64%
WKD	0.54%	0.54%	0.56%
Arriva RP	0.46%	0.51%	0.50%
UBB	0.004%	0.004%	0.004%
Others	0.01%	0.01%	0.01%

Share of RUs in terms of transport performance January - September 2017

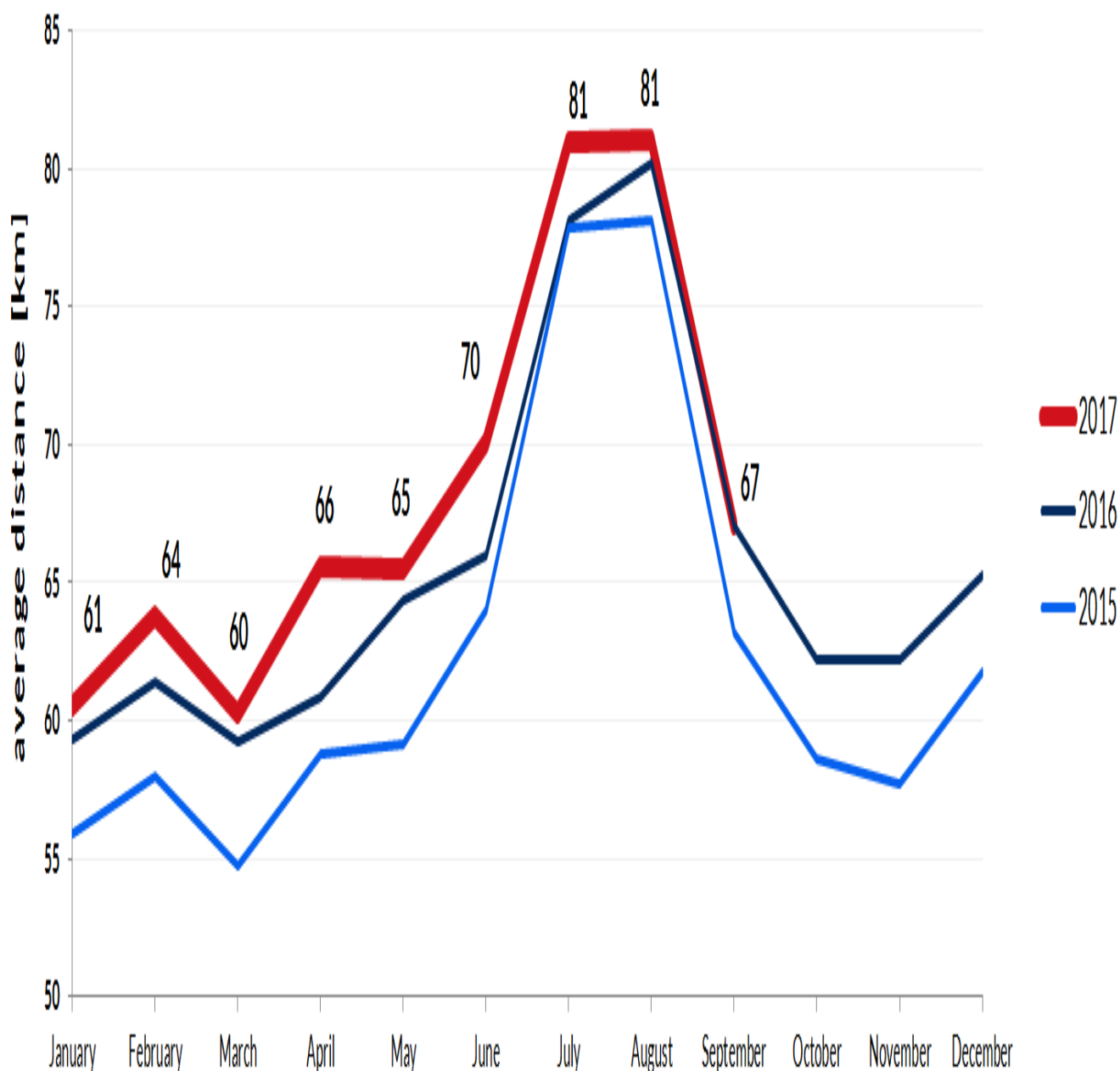


Operational performance [m train-km]

	2017	2016	2015	change % 2017/2016	change % 2016/2015
January	13.77	13.20	11.96	4.36%	10.37%
February	12.63	12.74	11.09	-0.92%	14.88%
March	13.93	13.26	12.18	5.01%	8.87%
April	13.08	12.98	11.63	0.79%	11.59%
May	13.86	13.47	11.94	2.92%	12.82%
June	13.43	13.34	11.71	0.68%	13.85%
July	14.03	14.28	12.66	-1.74%	12.81%
August	14.24	14.01	12.49	1.64%	12.24%
September	13.02	13.07	11.58	-0.36%	12.87%
October		13.23	12.10		9.40%
November		12.92	11.69		10.51%
December		13.48	12.41		8.54%

Average distance [km]

	2017	2016	2015	change % 2017/2016	change % 2016/2015
January	61	59	56	2.07%	6.11%
February	64	61	58	3.95%	5.85%
March	60	59	55	1.67%	8.32%
April	66	61	59	7.67%	3.54%
May	65	64	59	1.68%	8.89%
June	70	66	64	6.11%	3.11%
July	81	78	78	3.66%	0.33%
August	81	80	78	0.99%	2.70%
September	67	67	63	0.12%	6.07%
October		62	59		6.01%
November		62	58		7.78%
December		65	62		5.77%



List of railway undertakings performing passenger transport activity in 2017 based on passenger licence

1	PKP Intercity S.A.
2	PKP SKM w Trójmieście Sp. z o.o.
3	PKP Cargo S.A.
4	Przewozy Regionalne Sp. z o.o.
5	Koleje Mazowieckie - KM Sp. z o.o.
6	Warszawska Kolej Dojazdowa Sp. z o.o.
7	Szybka Kolej Miejska Sp. z o.o. - Warszawa

8	Koleje Dolnośląskie S.A.
9	Koleje Wielkopolskie Sp. z o.o.
10	Koleje Śląskie Sp. z o.o.
11	Arriva RP Sp. z o.o.
12	Łódzka Kolej Aglomeracyjna Sp. z o.o.
13	Koleje Małopolskie Sp. z o.o.
14	Cargo Master Sp. z o.o.
15	SKPL Cargo Sp. z o.o.
16	Railpolonia Sp. z o.o.
17	Parowozownia Wolsztyn
18	Dolnośląskie Linie Autobusowe sp. z o.o.

Please note that data do not include results of narrow-gauge railway undertakings.
Furthermore, there might be corrections and updates.

Analysis Unit in the Railway Market Regulation Department

(DRRK - Departament Regulacji Rynku Kolejowego)

analizy@utk.gov.pl

tel. +48 22 749 15 50