

Office of Rail Transport

https://utk.gov.pl/en/markettstatistics-and-ann/monthly-statistics/monthly-statistic-2018/14300,Passenger-rail-transport.
html
20.04.2024, 17:04

This page has a newer version

[Click here to continue](#)

Passenger rail transport

A large, light gray icon of a document with a folded corner, representing a file. Overlaid on the bottom left of this icon is a dark green rectangle with the word "XLSX" in large, white, bold, sans-serif capital letters.

XLSX

[More information in](#)

[MS Excel file](#)

	January - April 2018	January - April 2017	January - April 2016	change % 2018/2017	change % 2017/2016
number of passengers [m]	97.31	100.84	96.04	-3.50%	5.00%
transport performance [m pass-km]	6 230.68	6 300.12	5 782.50	-1.10%	8.95%
operating performance [m train-km]	54.50	53.41	52.18	2.05%	2.35%

Number of passengers [m]

	2018	2017	2016	change % 2018/2017	change % 2017/2016
January	24.92	25.71	23.36	-3.08%	10.05%
February	23.03	23.55	23.41	-2.20%	0.59%
March	24.25	26.48	24.72	-8.42%	7.13%
April	25.12	25.11	24.55	0.04%	2.27%
May		26.82	25.44		5.43%
June		25.80	24.38		5.81%
July		25.29	25.43		-0.56%

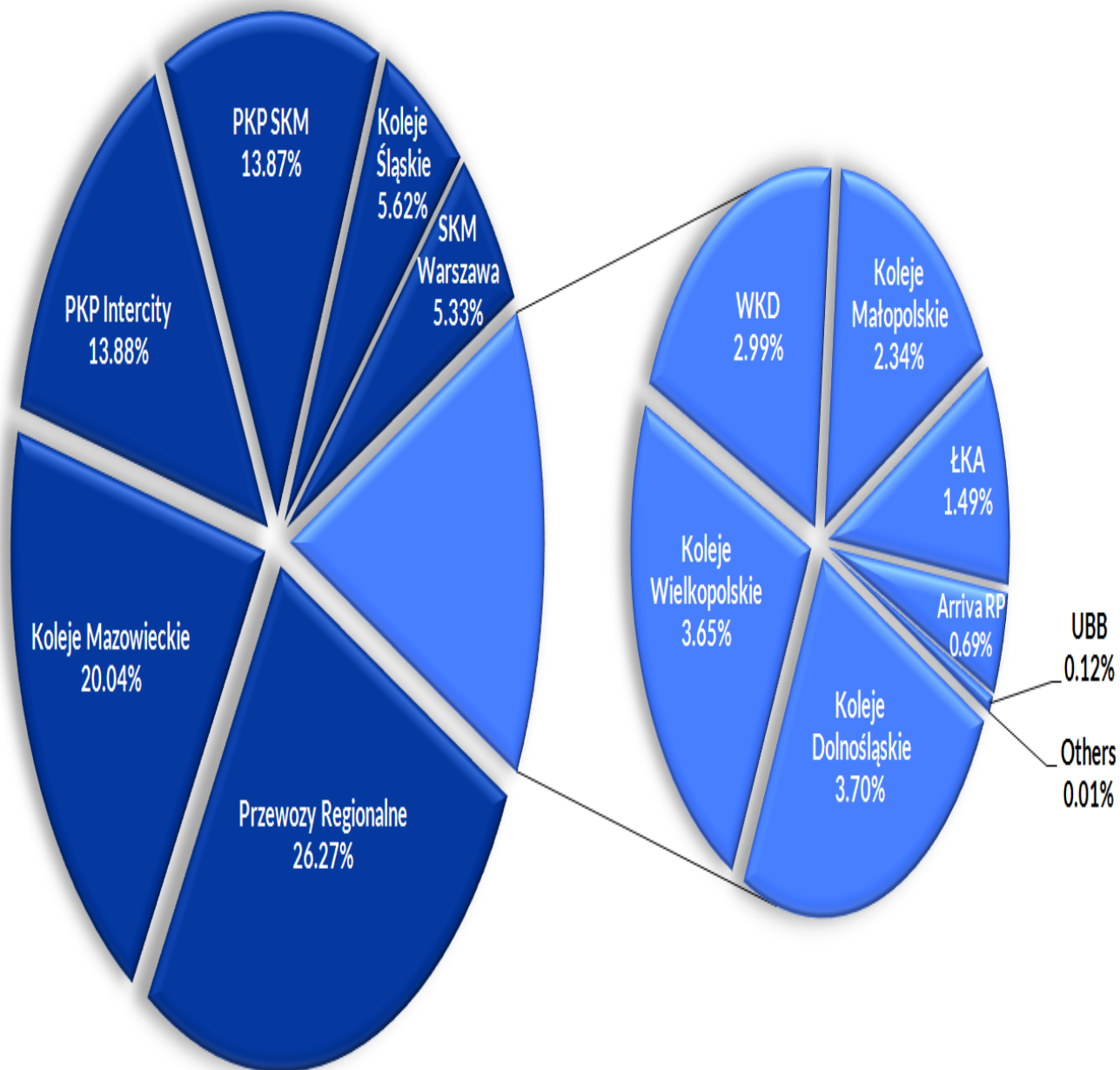
	2018	2017	2016	change % 2018/2017	change % 2017/2016
August		24.95	24.24		2.95%
September		24.14	23.32		3.51%
October		26.55	25.68		3.39%
November		24.88	24.61		1.08%
December		24.28	23.40		3.75%

Share of RUs in terms of number of passengers

	I-IV 2018	I-IV 2017	2017
Przewozy Regionalne	26.27%	27.06%	26.31%
Koleje Mazowieckie	20.04%	21.48%	20.44%
PKP Intercity	13.88%	12.69%	14.11%
PKP SKM	13.87%	13.61%	13.94%
Koleje Śląskie	5.62%	5.15%	5.18%
SKM Warszawa	5.33%	8.05%	7.60%
Koleje Dolnośląskie	3.70%	2.94%	3.09%
Koleje Wielkopolskie	3.65%	2.80%	2.67%
WKD	2.99%	2.35%	2.55%
Koleje Małopolskie	2.34%	1.81%	1.89%
ŁKA	1.49%	1.19%	1.27%
Arriva RP	0.69%	0.75%	0.77%
UBB	0.12%	0.12%	0.17%
Others	0.01%	0.01%	0.02%

Share of RUs in terms of number of passengers

January - April 2018



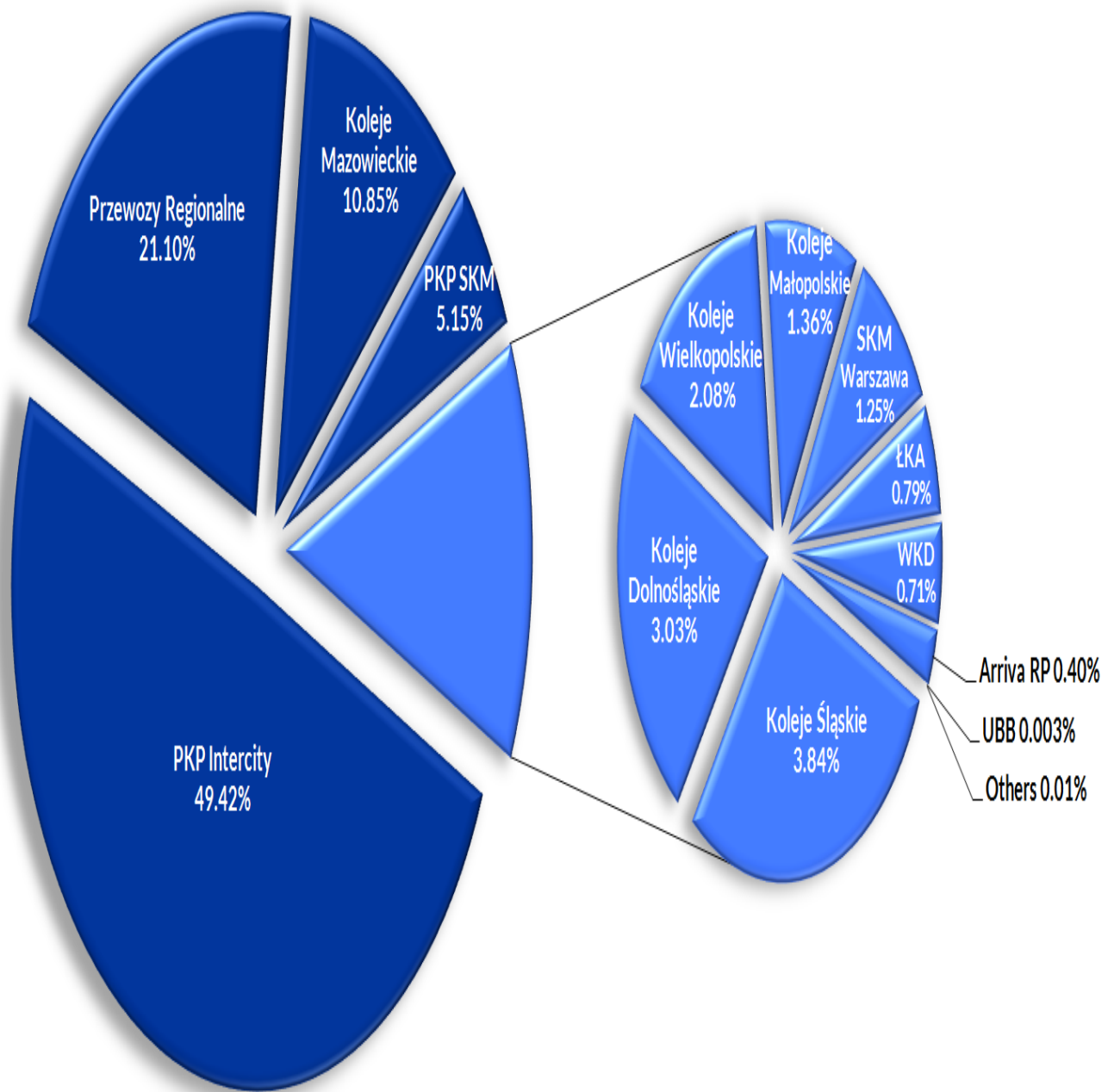
Transport performance [m pass-km]

	2018	2017	2016	change % 2018/2017	change % 2017/2016
January	1 564.81	1 556.10	1 385.45	0.56%	12.32%
February	1 482.42	1 502.47	1 437.02	-1.33%	4.55%
March	1 549.41	1 595.72	1 465.25	-2.90%	8.90%
April	1 634.04	1 645.83	1 494.78	-0.72%	10.11%
May		1 754.83	1 637.91		7.14%
June		1 805.86	1 609.51		12.20%
July		2 046.50	1 986.52		3.02%
August		2 021.84	1 944.74		3.96%
September		1 619.28	1 564.12		3.53%
October		1 662.39	1 596.76		4.11%
November		1 551.05	1 530.79		1.32%
December		1 559.17	1 528.15		2.03%

Share of RUs in terms of transport performance

	I-IV 2018	I-IV 2017	2017
PKP Intercity	49.42%	47.21%	51.13%
Przewozy Regionalne	21.10%	22.43%	20.74%
Koleje Mazowieckie	10.85%	11.99%	10.77%
PKP SKM	5.15%	5.75%	5.42%
Koleje Śląskie	3.84%	3.45%	3.38%
Koleje Dolnośląskie	3.03%	2.56%	2.50%
Koleje Wielkopolskie	2.08%	2.09%	1.76%
Koleje Małopolskie	1.36%	0.81%	0.83%
SKM Warszawa	1.25%	1.93%	1.70%
ŁKA	0.79%	0.72%	0.70%
WKD	0.71%	0.57%	0.58%
Arriva RP	0.40%	0.48%	0.47%
UBB	0.003%	0.003%	0.004%
Others	0.01%	0.004%	0.01%

Share of RUs in terms of transport performance January - April 2018

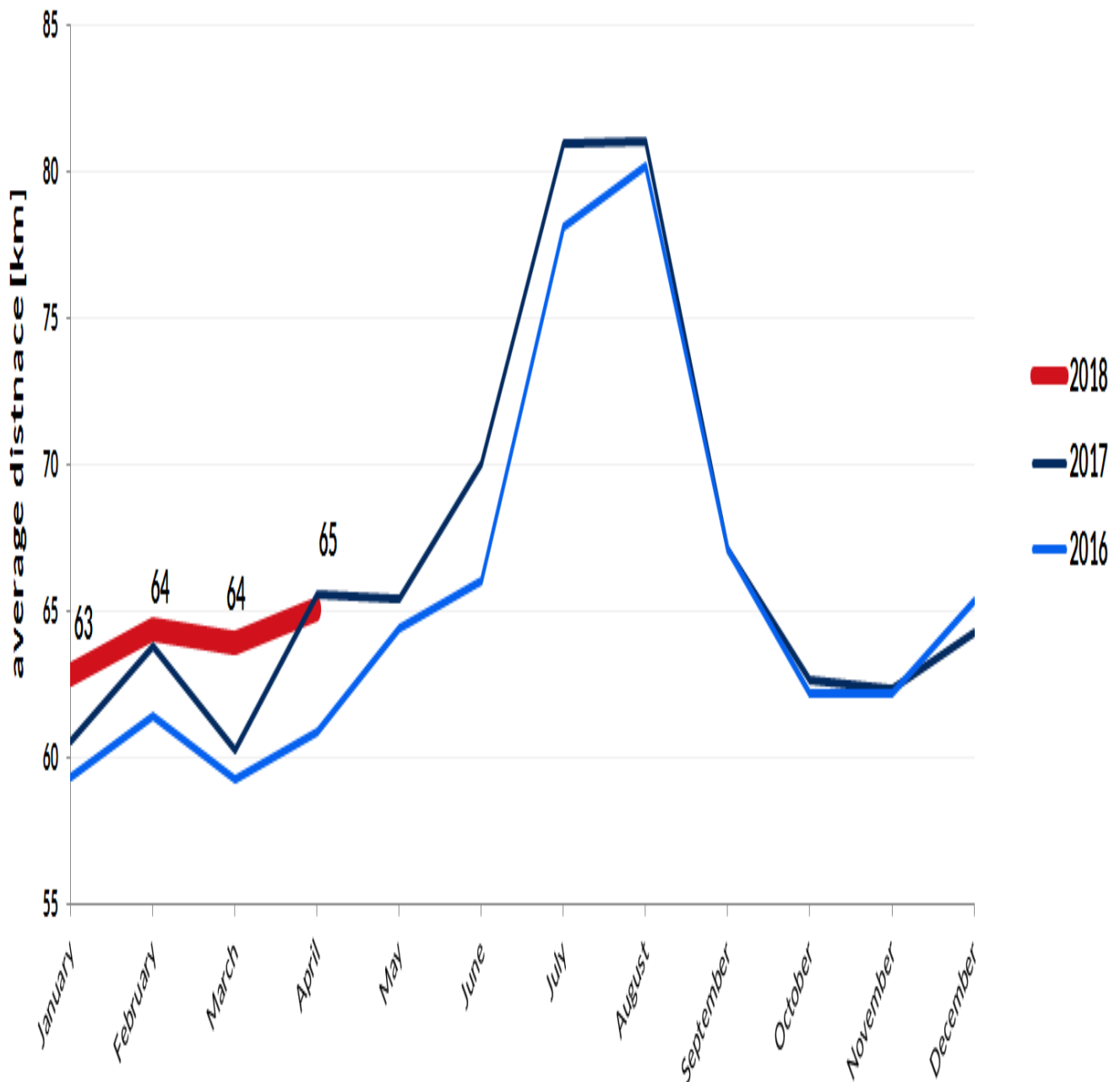


Operating performance [m train-km]

	2018	2017	2016	change % 2018/2017	change % 2017/2016
January	14.27	13.77	13.20	3.58%	4.36%
February	12.96	12.63	12.74	2.62%	-0.92%
March	13.94	13.93	13.26	0.14%	5.01%
April	13.33	13.08	12.98	1.91%	0.79%
May		13.86	13.47		2.92%
June		13.43	13.34		0.68%
July		14.03	14.28		-1.74%
August		14.27	14.01		1.83%
September		13.11	13.07		0.32%
October		13.50	13.23		2.01%
November		13.07	12.92		1.16%
December		13.59	13.48		0.82%

Average distance [km]

	2018	2017	2016	change % 2018/2017	change % 2017/2016
January	63	61	59	3.75%	2.06%
February	64	63.8	61	0.88%	3.94%
March	64	60	59	6.02%	1.66%
April	65	66	61	-0.76%	7.66%
May		65	64		1.62%
June		70	66		6.04%
July		81	78		3.60%
August		81	80		0.99%
September		67	67		0.02%
October		63	62		0.70%
November		62	62		0.25%
December		64	65		-1.66%



List of railway undertakings performing passenger transport activity in 2018 based on passenger licence

1	PKP Intercity S.A.
2	PKP SKM w Trójmieście sp. z o.o.
3	Przewozy Regionalne Sp. z o.o.
4	Koleje Mazowieckie - KM sp. z o.o.
5	Warszawska Kolej Dojazdowa sp. z o.o.
6	Szybka Kolej Miejska sp. z o.o. - Warszawa
7	Koleje Dolnośląskie S.A.
8	Koleje Wielkopolskie sp. z o.o.
9	Koleje Śląskie sp. z o.o.
10	Arriva RP sp. z o.o.
11	Łódzka Kolej Aglomeracyjna sp. z o.o.
12	Koleje Małopolskie sp. z o.o.
13	Cargo Master sp. z o.o.
14	SKPL Cargo sp. z o.o.

Please note that data do not include results of narrow-gauge railway undertakings.

Furthermore, there might be corrections and updates.

Monitoring and Analysis Unit in the Railway Market Regulation Department

analizy@utk.gov.pl

tel. +48 22 749 15 50